



architectural
GLASS BLOCK PRODUCTS



PITTSBURGH CORNING GLASS BLOCK

possibilitiesbegin.com

Pittsburgh Corning Corporation has been manufacturing Pittsburgh Corning Glass Block products since 1937 and today is the only domestic manufacturer in North America. The company recognizes its responsibility to provide a variety of products and to furnish accurate descriptive and technical information which will help the design professional select and specify Pittsburgh Corning Glass Block products.

The comprehensive variety of patterns, styles and sizes available have been designed to work together in your projects as a total system. Pittsburgh Corning stands behind all its glass block when used exclusively with Pittsburgh Corning accessory products by offering a limited five-year warranty.

www.pittsburghcorning.com features application photos, product information, specifications, installation details, literature, continuing education, case histories, and much more information on how to design with Pittsburgh Corning Glass Block products.

"We selected the glass block to create a visually stunning separation between the research and clinical pavilions. It enabled the transmission of natural daylight into the labs and treatment areas while still maintaining the appropriate degree of privacy. The use of glass block greatly contributed to the Hillman Cancer Center's artful expression of both the functional and emotional needs of the clinical pavilion dedicated to healing, and the opportunity for interaction and flexibility of a research pavilion dedicated to finding a cure." ~ Mihai Marcu, AIA, President, IKM Inc.

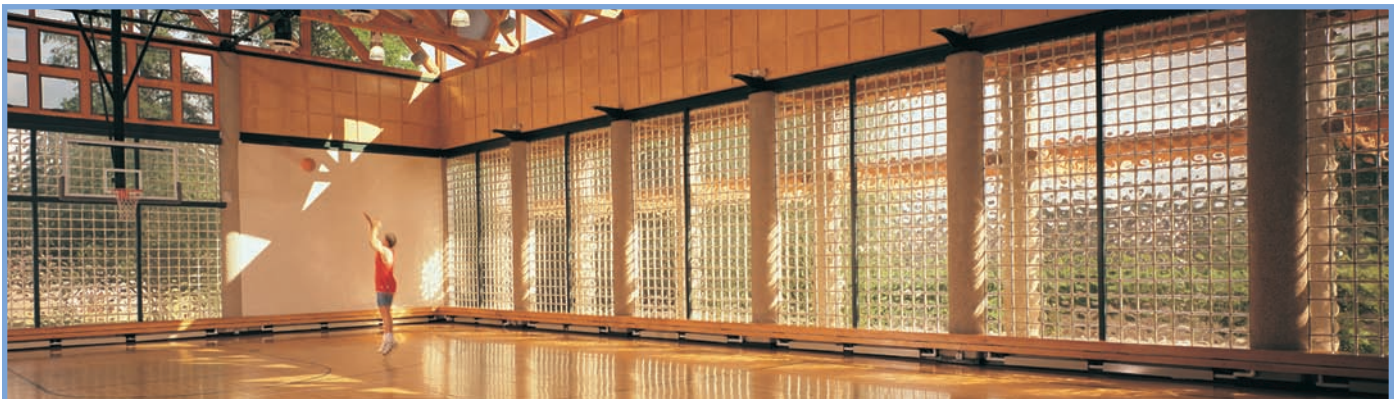
CIRCLE OF DESIGN EXCELLENCE AWARD WINNER

Sponsored by Pittsburgh Corning, this program recognizes those designs where glass block forms a prominent architectural feature of a building, either interior or exterior.

Hillman Cancer Center, Pittsburgh, PA // Architect: IKM Inc.



"This building is going to be used for everything from black tie parties to basketball games. So every inch of this place has to endure years of hard wear – and look great doing it. VISTABRIK® Glass Block has the perfect balance of durability, security and sheer beauty to make this place special." ~ Lisa Armstrong, AIA, Architect, Armstrong Kaulbach Architects



Lloyd Hall, Philadelphia, PA // Architect: Armstrong Kaulbach Architects // VISTABRIK® Solid Glass Block, VUE® Pattern

ON THE COVER: Veteran's Administration Hospital Chapel, Detroit, MI // Architect: Smith, Hinchman & Grylls, Inc. // DECORA® Pattern

Beauty and Versatility

Extraordinarily versatile and available in many aesthetically pleasing sizes and styles, glass block offers virtually limitless design possibilities. Glass block walls, partitions and windows combine the delicate beauty and light transmission of glass with the strength of glass block.

Security

When top architects need to add security to their projects, Pittsburgh Corning answers with a range of solutions from the Premiere Series, THICKSET® Series or VISTABRIK® Glass Block.

Visibility/Light Transmission

Glass block provides exceptional visibility in compliance with ADA guidelines for enclosed areas. It is also scratch-resistant and transmits up to 80% of available light in both directions without any yellowing, clouding or weathering.

Earthquake Resistance

The Northridge, CA earthquake on January 17, 1994 was the largest earthquake in the United States to have its epicenter in an urban area. A detailed survey was made of the performance of structures containing Pittsburgh Corning glass block panel applications. In all sites visited, the glass block walls and panel systems that were designed and constructed in accordance with Pittsburgh



North Hollywood Police Station, N. Hollywood, CA
Architect: Meyer & Allen Associates // ARGUS® Pattern and HEDRON® Corner Block

"This building had to embody the LAPD's more open, community-oriented mission. The ARGUS® pattern glass block was really critical in creating that openness. It gives us the perfect balance of light and security." ~ Clifton Allen, Architect

Corning specifications and the provision of the Uniform Building Code resisted the seismic forces without failure.

Graffiti Resistant

Glass block resists damage and is easy to clean.

Noise Resistant

Three inches of solid glass makes VISTABRIK® a dense barrier to sounds from trains, traffic, crowds, sirens, and machinery with a 53 STC level. THICKSET® Series Block STC ranges between 48-50, and Premiere Series Glass Block 35 to 40.

Bullet Resistant

UL® tested and approved for Levels 1, 2, and 6, VISTABRIK® resists penetration from high-impact ballistics, including 9mm and .357 magnum bullets.

Energy Conservation

Glass block can provide more than double the thermal resistance (R-Value) of single-glaze 1/8" thick plate glass. The differences between the shading coefficient of glass block and flat sheet glass is also significant.

Fire Resistant

An important feature of glass block, critical to safe building design, is the product's inherent fire-resistance property. By varying the face thickness of the product and conforming to installation specifications, Pittsburgh Corning is able to offer a family of fire rated products approved and rated according to Underwriters Laboratory (UL®), standards. Glass block are available in 45-, 60- and 90-minute ratings for window assemblies. See page 8 for additional technical information. Visit our website at www.pittsburghcorning.com for electronic details.



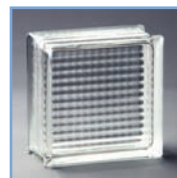
PREMIERE SERIES

- Includes the largest selection of patterns and sizes for the utmost in design flexibility.
- All patterns are classified by UL®, for use in 45-minute rated window assemblies.
- All sizes available are rated except 12" x 12" and shapes.
- Nominal face thickness: 0.25"



THICKSET® 60 Block

- Classified by UL®, for use as 45- or 60-minute rated window assemblies.
- Nominal face thickness: 0.375"



THICKSET® 90 Block

- Classified by UL®, for use as 45-, 60- or 90-minute rated window assemblies.
- Nominal face thickness: 0.75"



VISTABRIK® Solid Glass Block

- The ultimate glass block solution, 3 solid inches of glass which resists bullets, fire, noise, and graffiti.
- Classified by UL®, for use as 45-, 60- or 90-minute rated window assemblies.
- Actual face thickness: 3.0"

LIGHTWISE® ARCHITECTURAL SYSTEMS

The Latest in Our Lineup of Possibilities. Aesthetically Stunning. Functionally Smart.

Two new LightWise® Architectural Systems products that offer not only enhanced security and peace of mind but also aesthetically pleasing options to let in light while providing various levels of privacy:

- Blast-Resistant Glass Block Panels
- Hurricane-Resistant Aluminum Framed Glass Block Window

Each is engineered to the highest standard and pre-fabricated in our own facility. With rigorous testing by third parties, we guarantee the performance, quality and ease of installation of every panel. Should you require, we'll work with you to create unique panels customized to the needs of your specific project and you can order direct from Pittsburgh Corning Corporation.

Blast-Resistant Glass Block Panel

With the increased threat and awareness of terrorist and criminal attacks from explosive ballistic devices, Pittsburgh Corning has developed and tested a new generation of patent-pending blast-resistant panels that meets GSA and UFC 04-010-01 blast glass standards.

Many injuries to building occupants are caused by glass fragments sent flying through the air from the force of a blast. Unlike laminated flat glass, which will often crack and sometimes release fragments during a blast, there was no cracking or loss of glass in the tests conducted on our Blast-Resistant Glass Block Panels.



- Panelized system can be easily and quickly installed
- Panels can be customized to meet project requirements

- Offers a range of visibility and privacy options
- Provides daylighting
- Panels can be installed from either the interior or the exterior of a building
- Graffiti-resistant, damage-resistant and easy to clean
- Noise reduction
- Real glass is easy to maintain and will not yellow over time or scratch easily, unlike films or plastics

Size Capabilities

Sizes range between 4 feet by 4 feet and 8 feet by 8 feet. Custom-sized panels are available and can be engineered for each specific project.

Hurricane-Resistant Aluminum Framed Glass Block Window

The new Hurricane-Resistant Aluminum Framed Glass Block Window by Pittsburgh Corning is the ideal system for use in commercial applications where beauty, light transmission and protection against hurricane force winds and debris is critical.



The window has passed the large missile impact tests recognized by the International Building Code and Dade County and is approved for use in coastal areas. This makes the perfect solution if you want beauty and function that will weather most any storm.

Size Capabilities

Sizes range up to 4 feet by 8 feet. Other sizes are available in 8 inch increments.

Another new offering from Pittsburgh Corning Corporation is its new Collaborative Customization program. Pittsburgh Corning can partner with you to provide resources at multiple stages of design from creative inspiration through collaborative product development. If you need a custom glass block product to make your design a reality, Pittsburgh Corning can help. We have Sales Managers and technical support personnel that can work with you to make it happen. Visit our new website www.possibilitiesbegin.com which was designed specifically to help you to imagine the possibilities!

Natural Light. Natural Material. Naturally Inspired. Sustainable Design.

What's more inspiring than form meeting function? Glass block, made largely from sand and limestone, is 100 percent recyclable, inert, low maintenance, and highly durable, lasting 50 years or more. Yet its dynamic relationship with light gives architects the opportunity to create both aesthetically pleasing and energy efficient spaces.

Glass Block and Sustainable Design

Pittsburgh Corning glass block not only supports LEED® building certification, it also contributes to sustainable design in other ways:

1. Safety and Security

- Glass block is noncombustible
- Glass block combines visibility with security

2. Environmentally Preferable Materials and Products

- Glass block is made largely from sand, an abundant raw material
- Glass block is recyclable
- Glass block is durable
- Glass block has low construction waste

3. Visual Comfort

- Certain glass block products may help avoid glare

PITTSBURGH CORNING GLASS BLOCK PRODUCTS									
Pattern	Nominal Size ¹ (Actual size is 1/4" less than nominal; mm shown is actual)	Weight (lb/ft ²) installed with mortar	Heat Transmission ² U Value (Btu/hr ft ² °F)	Thermal Resistance ² R Value (hr ft ² °F/Btu)	Visible Light Transmission ³ (%)	Shading Coef. ⁵	Sound Transmission S.T.C.	Solar Heat Gain Coefficient ⁷	
THICKSET® Block — Nominal Thickness = 4"; Actual Thickness = 3/8" (98mm)									
HIGH PERFORMANCE LINE	THICKSET® 60 Block— DECORA® & VUE®	8" x 8" (197mm)	25	0.51	1.96	VUE®=75 DECORA®=49	0.65	48	.66-.68 ⁷
	THICKSET® 90 Block— DECORA® & VUE®	8" x 8" (197mm)	30	0.51	1.96	VUE®=70 DECORA®=38	0.65	50	.66-.68 ⁷
	THICKSET® 90 Block— ENDURA™	8" x 8" (197mm)	30	0.51	1.96	38	0.65	50	.66-.68 ⁷
Glass Block with "LX" Fibrous Glass Inserts — Nominal Thickness = 4"; Actual Thickness = 3/8" (98mm)									
HIGH PERFORMANCE LINE	DECORA® "LX" Filter	6" x 6" (146mm) †	20	0.48	2.06	50-55 ⁴	0.45 ⁴		.56
		8" x 8" (197mm)	20	0.48	2.06	50-55 ⁴	0.45 ⁴	40	.56
		12" x 12" (299mm) †	20	0.48	2.06	50-55 ⁴	0.45 ⁴		.56
VISTABRIK® Solid Glass Block — See Nominal/Actual Sizes Listed									
HIGH PERFORMANCE LINE	VISTABRIK® Solid Glass Block	8" x 8" x 3" Nominal 7 7/8" x 7 7/8" x 3" Actual (194mm x 194mm x 76mm)	40	0.87	1.15	80		53 (NRC=0.05)	.75-.78 ⁷
		6" x 8" x 3" Nominal 5 5/8" x 7 7/8" x 3" Actual (146mm x 194mm x 76mm)	40	0.87	1.15	80			.75-.78 ⁷
		4" x 8" x 3" Nominal 3 3/8" x 7 7/8" x 3" Actual (92mm x 194mm x 76mm)	40	0.87	1.15	80			.75-.78 ⁷
		(Paver) 8" x 8" x 1 1/2" Nominal 7 7/8" x 7 7/8" x 1 1/2" Actual (194mm x 194mm x 38mm) †	N/A	0.87	1.15	80			.75-.78 ⁷
	STIPPLE Finish	8" x 8" x 3" Nominal 7 7/8" x 7 7/8" x 3" Actual (194mm x 194mm x 76mm) †	40	0.87	1.15	80		53 (NRC=0.05)	.75-.78 ⁷
Standard Premiere Series Block — Nominal Thickness = 4"; Actual Thickness = 3/8" (98mm)									
SIGNATURE LINE	ARGUS®	6" x 6" (146mm)	20	0.51	1.96	75	0.65	37	.66-.68 ⁷
		8" x 8" (197mm)	20	0.51	1.96	75	0.65	39	.66-.68 ⁷
		12" x 12" (299mm)	20	0.51	1.96	75	0.65	35	.66-.68 ⁷
	DECORA®	6" x 6" (146mm)	20	0.51	1.96	75	0.65	37	.66-.68 ⁷
		8" x 8" (197mm)	20	0.51	1.96	75	0.65	39	.66-.68 ⁷
		12" x 12" (299mm)	20	0.51	1.96	75	0.65	35	.66-.68 ⁷
		4" x 8" (95 x 197mm)	20	0.51	1.96	75	0.65		.66-.68 ⁷
	ESSEX® AA	6" x 8" (146 x 197mm)	20	0.51	1.96	75	0.65		.66-.68 ⁷
		8" x 8" (197mm)	20	0.51	1.96	50 ⁴	0.45 ⁴	39	.66-.68 ⁷
		8" x 8" (197mm)	20	0.51	1.96	75	0.65	39	.66-.68 ⁷
	FOCUS™	8" x 8" (197mm)	20	0.51	1.96	75	0.65	39	.66-.68 ⁷
		8" x 8" (197mm)	20	0.51	1.96	75	0.65	39	.66-.68 ⁷
		4" x 8" (95 x 197mm)	20	0.51	1.96	75	0.65		.66-.68 ⁷
	IceScapes®	6" x 8" (146 x 197mm)	20	0.51	1.96	75	0.65		.66-.68 ⁷
		8" x 8" (197mm)	20	0.51	1.96	75	0.65	39	.66-.68 ⁷
		8" x 8" (197mm)	20	0.51	1.96	75	0.65	39	.66-.68 ⁷
	SeaScapes™	4" x 8" (95 x 197mm)	20	0.51	1.96	75	0.65		.66-.68 ⁷
		6" x 8" (146 x 197mm)	20	0.51	1.96	75	0.65		.66-.68 ⁷
8" x 8" (197mm) †		20	0.51	1.96	75	0.65	39	.66-.68 ⁷	
VUE®	8" x 8" (197mm)	20	0.51	1.96	75	0.65	39	.66-.68 ⁷	
	6" x 6" (146mm)	20	0.51	1.96	75	0.65	37	.66-.68 ⁷	
	8" x 8" (197mm)	20	0.51	1.96	75	0.65	39	.66-.68 ⁷	
	12" x 12" (299mm)	20	0.51	1.96	75	0.65	35	.66-.68 ⁷	
	4" x 8" (95 x 197mm)	20	0.51	1.96	75	0.65		.66-.68 ⁷	
VUE®	6" x 8" (146 x 197mm)	20	0.51	1.96	75	0.65		.66-.68 ⁷	
	6" x 6" (146mm)	20	0.51	1.96	75	0.65	37	.66-.68 ⁷	
	8" x 8" (197mm)	20	0.51	1.96	75	0.65	39	.66-.68 ⁷	
	12" x 12" (299mm)	20	0.51	1.96	75	0.65	35	.66-.68 ⁷	
	4" x 8" (95 x 197mm)	20	0.51	1.96	75	0.65		.66-.68 ⁷	
Designer Select Art Series — Nominal Thickness = 4"; Actual Thickness = 3/8" (98mm)									
Burgundy, Iridescent, Krinkle, Satin, Sky Blue & White	8" x 8" (197mm) †	20	0.51	1.96	NA	NA	NA	NA	

1/8" FLAT SHEET GLASS COMPARISON (3mm) 1.04 0.96 90 1.00 28

1 Size: Block are manufactured to a ± 1/16" (2mm) tolerance. **HANDBOOK OF FUNDAMENTALS, 2005, Section 31.3.** **5 Shading Coefficient:** Based on 8"-sq. units; ratio of heat gain through glass block panels vs. that through a single light of double-strength sheet glass under specific conditions. **6 Sound Transmission:** Assembly construction with Kwik'N EZ® Silicone System. **7 SHGC:** Default values as interpreted from International Energy Conservation Code.

2 Heat Transmission/Thermal Transmission: Winter night values. To calculate instantaneous heat gain through glass panels, see ASHRAE **3 Light Transmission:** Values ±5%. **4 Light Transmission/Shading Coefficient:** Estimated figures based on accumulated data.

† MTO – Made to Order items subject to minimum order quantities and lead times.

PITTSBURGH CORNING GLASS BLOCK PRODUCTS

HIGH PERFORMANCE LINE –

Pittsburgh Corning's High Performance Line of glass block products is comprised of products that offer the highest value, performance features and benefits related to improved safety, energy efficiency, aesthetics and decorative choices.



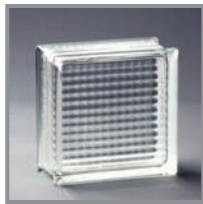
THICKSET® Block

Cutaways show the greater face thickness of the THICKSET® Series Block. THICKSET® 60 Block on left vs. the THICKSET® 90 Block on right.



THICKSET® 90 Block DECORA® Pattern

THICKSET® 90 block provides a 90-minute fire rating. The DECORA® pattern provides maximum light transmission with subtle visual distortion. The nondirectional faces make installation quick.



THICKSET® 90 Block ENDURA™ Pattern

THICKSET® 90 block provides a 90-minute fire rating. The ENDURA™ pattern's narrow flutes provide moderate light transmission/ maximum privacy.



THICKSET® 90 Block VUE® Pattern

THICKSET® 90 block provides a 90-minute fire rating. The VUE® pattern transmits maximum light and allows ultimate visibility.



THICKSET® 60 Block DECORA® Pattern

THICKSET® 60 block provides a 60-minute fire rating. The DECORA® pattern provides maximum light transmission with subtle visual distortion. The nondirectional faces make installation quick.



THICKSET® 60 Block VUE® Pattern

THICKSET® 60 block provides 60-minute fire rating. The VUE® pattern transmits maximum light and allows ultimate visibility.



DECORA® LX Pattern

Fibrous glass insert adds moderate thermal and light characteristics. Maximum privacy. Please note: The "LX" fibrous glass insert is available in other patterns and sizes by special order. Minimum order quantities apply.



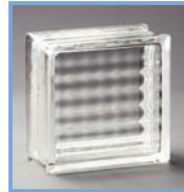
VISTABRIK® Solid Glass Block

Solid 3" solid glass block. Clear visiaesthetically attractive. Excellent light transmission. Available in 8" x 8", 6" x 8" and 4" x 8" sizes.



SIGNATURE LINE – Pittsburgh Corning's Signature Line of glass block products is comprised of high quality Premiere Series products and the largest selection of patterns and shapes. This line has become the standard in the industry and provides the most design flexibility in the selection and use of glass block for walls, windows, partitions, and showers in residential and commercial applications.

Premiere Series Glass Block



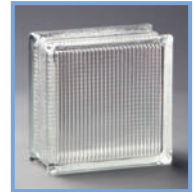
ARGUS® Pattern

Rounded perpendicular flutes diffuse light while allowing maximum light transmission and a medium degree of privacy.



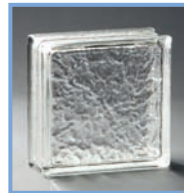
DECORA® Pattern

The trademark wavy undulations of this pattern provides maximum light transmission with subtle visual distortion. The nondirectional faces make installation quick.



ESSEX® AA Pattern

The fine grid design of the closely spaced ridges in this pattern offers moderate light transmission and a maximum degree of privacy.



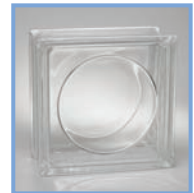
IceScapes® Pattern

Non-directional pattern lets light in without sacrificing privacy. Maximum light transmission/medium to maximum privacy.



VUE® Pattern

Faces are smooth and undistorted to transmit the most light and allow ultimate visibility. This is your best choice for passive solar collection and visual clarity.



FOCUS™ Pattern

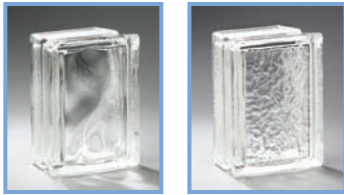
This new circular pattern gives an exciting new way to bring more light and drama to any project.

possibilitiesbegin.com

Visit our new website which was designed specifically to help you to imagine the possibilities.

SIGNATURE LINE – Premiere Series Glass Block (continued)...

Shapes and Finishing Units



ARQUE® Block
DECORA® and IceScapes® Patterns

ARQUE® Block is a brilliant way to create smooth, graceful curves and columns. ARQUE® Block forms a consistent, tight curve ideally suited for columns.



ENCURVE® Block,
DECORA® and IceScapes® Patterns

Arched, soft edges to round out your design options or finish panels. Use with 8" x 8" EndBlock™ Finishing Units for a stepped panel.



HEDRON® Corner Block
DECORA® and IceScapes® Patterns

Hexagonal corner unit allows you to form 90-degree corners resulting in a gently rounded continuous glass face.



EndBlock™ Finishing Unit DECORA® and IceScapes® Patterns 6" x 8" and 8" x 8"

The rounded, finished surface on one edge of these blocks makes them virtually disappear when used vertically or horizontally on the edges of panels, walls or dividers.



TRIDRON 45° Block®
DECORA® and IceScapes® Patterns

The unique shape of this block lets you create everything from 45-degree angles to full circles.

MADE TO ORDER PRODUCTS – Items listed below are subject to minimum order quantities and lead times.

Designer Select Art Series

Interior applications only. No two blocks are alike due to the pattern variations found in each, making every project truly unique.



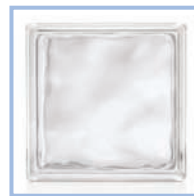
Burgundy



Iridescent



Krinkle



Satin

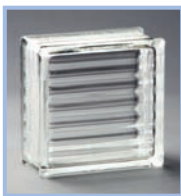


Sky Blue



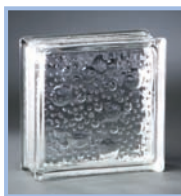
White

Premiere Series Glass Block



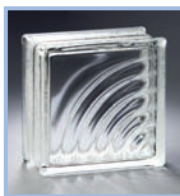
ARGUS® Parallel Fluted Pattern

Rounded parallel flutes on each face diffuse light while allowing maximum light transmission and a medium degree of privacy. Compliments the SPYRA® pattern.



SeaScapes™ Pattern

The three dimensional circles appear to float within the glass block. The pattern lets in light and also provides a degree of privacy.



SPYRA® Pattern

SPYRA® Pattern gives you many options for decorative patterns, such as bold circles, rounded corners and the illusions of waves. Maximum light transmission and minimal privacy.



PC® Custom Signature Block

Custom manufactured with your corporate logo or other design pressed into one or both inside surfaces of an eight inch square, standard unit.



VISTABRIK® Stippled Glass Block

Solid 3" thickness of glass with a stippled finish to add privacy. Durable, impact, vandal and bullet resistant, low maintenance and aesthetically attractive. Good light transition/medium privacy.



VISTABRIK® Paver

One and a half inches of solid glass. Clear, durable, low maintenance. Excellent light transmission. Horizontal applications only.



HEDRON® LX Corner Block, DECORA® Pattern

Hexagonal corner unit allows you to form 90-degree corners resulting in a gently rounded continuous glass face.

FIRE RATINGS & CODE INFORMATION

All sizes (exceptions listed below) of Premiere Series and Thinline® Series glass blocks have at least a 45 minute fire rating when used as a window assembly within a one hour fire-rated wall assembly. All THICKSET® 90 (thick-faced) and solid glass blocks have fire ratings of up to 90 minutes, and the THICKSET® 60 and ESSEX® AA Pattern glass blocks have fire ratings of up to 60 minutes, when used as window assemblies and where permitted by code.

Pittsburgh Corning Glass Block units that are not fire-rated:

- All 12" x 12" sizes
- All DELPHI®, pattern block
- All HEDRON® Corner block, TRIDRON 45° Block® units, EndBlock®, ENCURVE® and ARQUE® finishing units
- All paver units
- VISTABRIK® Corner Block

PANEL SIZES AND DIMENSION LIMITATIONS

Pittsburgh Corning Glass Block listed above have been tested and classified by Underwriters Laboratories® (UL®) for use as fire-rated window assemblies to panel sizes and dimension limitations listed below:

- With the exception of all 12" x 12" sizes, finishing blocks, corner blocks and the DELPHI® pattern block, all Premiere Series and Thinline® Series glass blocks in panels up to 120 square feet in masonry walls or 94 square feet in non-masonry walls are classified by Underwriters Laboratories, for use as 45-minute rated window assemblies.
- The Uniform Building Code (U.B.C.) limits the area of 45 minute rated window assemblies to 84 square feet, with no dimension exceeding 12 feet. These panels are usually acceptable as window assemblies for use in fire separation walls that are rated one hour or less.

- THICKSET® 60 Block are listed for use as 45- or 60-minute fire rated window assemblies in panels up to 100 square feet.
- THICKSET® 90 Block and VISTABRIK® Solid Glass Block are all listed for use as 45-, 60- or 90-minute fire rated window assemblies in panels up to 100 square feet.
- Where permitted by building codes, glass block fire-rated window assemblies having a fire resistance rating of not less than 45 minutes may be used as "opening protectives." These assemblies shall not exceed 25% of the wall areas separating a tenancy from a corridor or a corridor from an enclosed vertical opening or one fire-rated area from another fire-rated area.
- **Exception:** Although glass block masonry systems have been tested as window assemblies (not wall assemblies), they may be used as one hour fire partitions as required for corridors in the enclosure of atriums only when sprinkler protection is provided on occupied sides.

45- AND 60-MINUTE RATED CONSTRUCTION

- All 45- and 60-minute rated Pittsburgh Corning Glass Block may be used in both masonry and non-masonry (steel or wood stud framing with gypsum board) walls.
- These rated glass block windows may be framed and anchored with either PC® Panel Anchor construction or channel-type restraints.
- The use of a fire retardant type sealant for head and jamb locations is required.
- Specifications and construction details for such panels are as per Pittsburgh Corning Corporation recommendations.
- Non-masonry, fire-rated steel stud with gypsum board wall assemblies must conform to UL® listed wall assembly #U465.

- Framing and support of the rated glass block window assembly shall be provided with double-studding at the jamb locations with height of supporting wall limited to no more than 3 feet.

90-MINUTE RATED CONSTRUCTION

- Where permitted by building codes, all 90-minute rated Pittsburgh Corning Glass Block may be used in masonry walls only.
- 90-minute rated glass block window assemblies must be framed and anchored with 1/4" thick steel (not aluminum) channel-type restraints or masonry chases. The use of panel anchor construction is not permitted.
- The use of a fire retardant type sealant for head and jamb locations is required.
- Specifications and construction details of such panels are as per Pittsburgh Corning Corporation recommendations.
- Twice the typical thickness (3/4" total) of expansion material is required at head and jamb locations.

45-MINUTE RATED CURVED CONSTRUCTION

- The glass blocks noted under 90-minute rating and those 8" x 8" x 4" sized glass block noted under 45-minute rating are classified for use in masonry walls as curved window assemblies, provided that the radius of the assembly is at least twice the opening width (i.e. chord length).

CODE COMPLIANCE

All of our fire-rated glass block products are listed in the Underwriters Laboratories current issue of the Fire Resistance Directory – Volume 3. A listing of our products can also be viewed on the Underwriters Laboratories Website at www.ul.com.

- U.L. Classification: R2556 (For Glass Block)
- Underwriters Laboratories of Canada Guide Number 23017 (For Glass Block)
- U.L. Classification: R18572 (For Plastic Spacers)
- In accordance with NFPA 80, Chapter 14

CITY CODE APPROVALS

- New York City Materials and Equipment Acceptance MEA 406-90-M. Vol.IV
- Los Angeles Research Report RR-24486
- Dade County Acceptance 07-0626.10 04-0301.01 04-0824.01 05-1107.02
- State of Florida Approvals FL 1363 FL 1366 FL 5357 FL 8039
- Texas Department of Insurance WIN #s 62, 63, 64, and 540

BUILDING CODE AND NATIONAL STANDARDS REFERENCES:

- The BOCA National Building Code (N.B.C.)
- The Standard Building Code (SBCCI)
- The Uniform Building Code (U.B.C.)
- International Building Code (IBC)
- Canadian Standards Association (CSA) A371-94 "Masonry Construction for Buildings"
- Canadian Standards Association (CSA) S304.1-94 "Masonry Design for Buildings"
- ACI 530/ASCE 5/TMS 402 "Building Code Requirements for Masonry Structures"

Pittsburgh Corning Glass Block Website

www.pittsburghcorning.com features application photos, product information, specifications, installation details, literature, continuing education, case histories, and much more information on how to design with Pittsburgh Corning Glass Block products.



To further our dedication to the architectural community, Pittsburgh Corning is teaming up with the AIA to bring you innovative ways to earn continuing education credits, including a great slide presentation that we can set up in your offices. This program provides HSW Learning Units. For more information, visit our website at www.pittsburghcorning.com.

The information contained herein is accurate and reliable to the best of our knowledge. But, because Pittsburgh Corning Corporation has no control over installation workmanship, accessory materials, or conditions of application, NO EXPRESS OR IMPLIED WARRANTY OF ANY KIND, INCLUDING THOSE OF MERCHANTABILITY OR FITNESS FOR A PARTICULAR PURPOSE, IS MADE as to the performance of an installation containing Pittsburgh Corning products. In no event shall Pittsburgh Corning be liable for any damages arising because of product failure, whether incidental, special, consequential or punitive, regardless of the theory of liability upon which any such damages are claimed. Pittsburgh Corning Corporation provides written warranties for many of its products, and such warranties take precedence over the statements contained herein.



800 Presque Isle Drive
Pittsburgh, PA 15239-2799
1-800-624-2120 (Glass Block Resource Center)
pittsburghcorning.com



© 2008 PITTSBURGH CORNING CORPORATION

UL® is a registered trademark of Underwriters Laboratories, Inc. All other trademarks and registered trademarks in this publication are owned and protected by Pittsburgh Corning Corporation, Pittsburgh, PA 15239 GBSA-09